



STUDENT REPORT CARD

Demo Student

XXXXXX@gmail.com

XXXXX University (School of Mechanical Engineering)

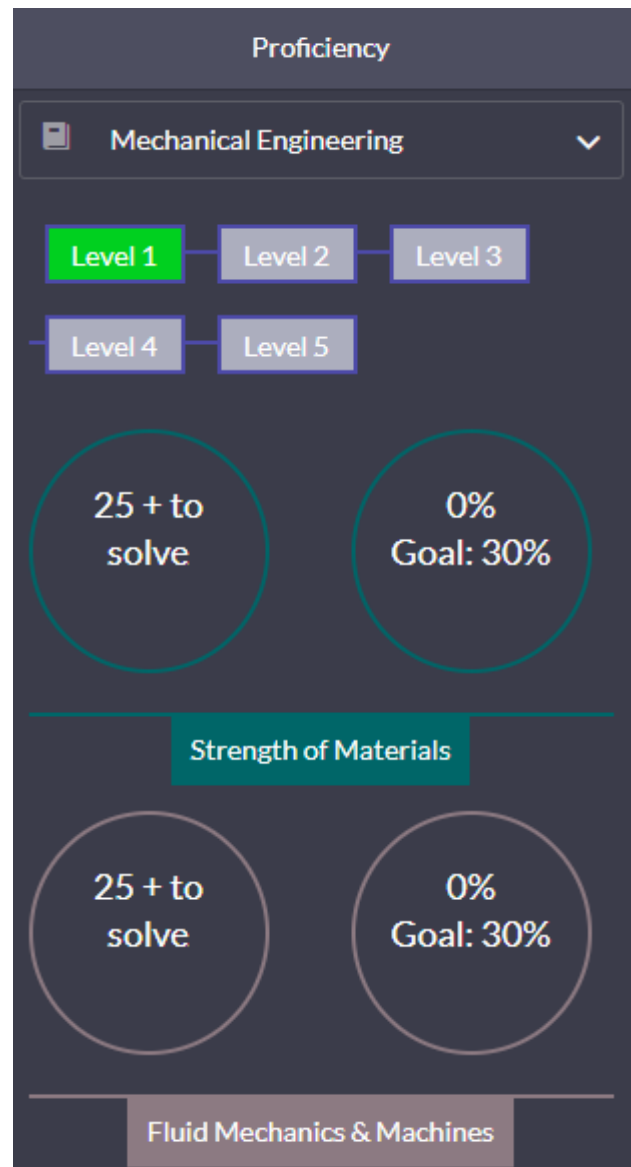
Valid upto : xx/xx/2019

Package Analysis:

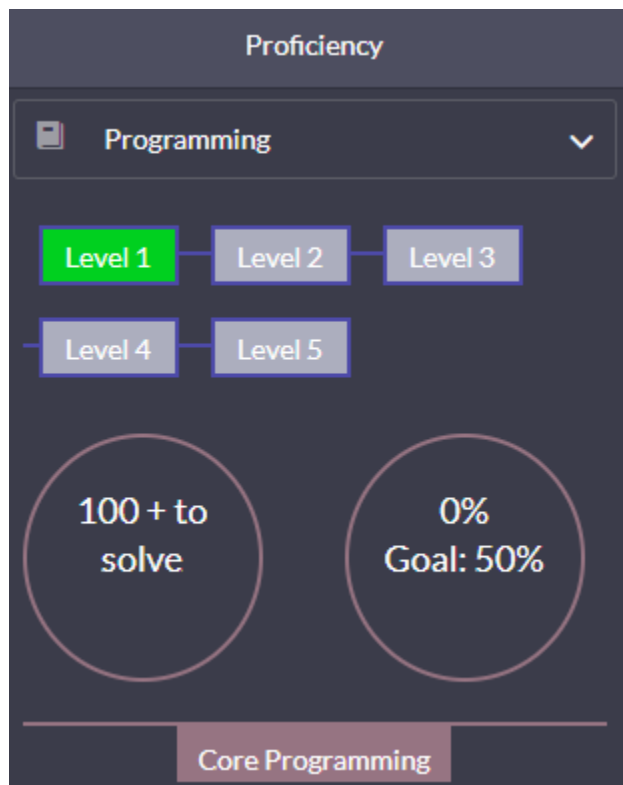
Cognite Package:



Core Package :



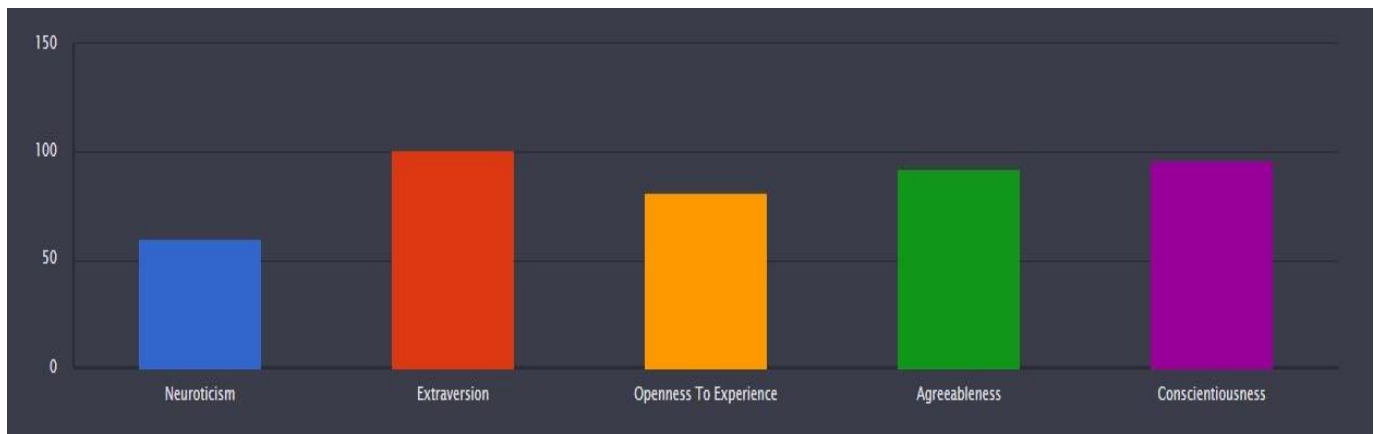
Programming Package :



The proficiency function helps to know what Level Student has achieved in different Modules. This student achieved Level 3 in Cognitive Package means he is almost ready for Campus Placements. The confidence factor increases if he clears Level 4.

Note: All the above accuracy and Level status can be seen on Dashboard only. This data is dynamic and changes with every attempted test.

Psychometric Analysis:



Neuroticism:

Neuroticism refers to the tendency to experience negative feelings.

Score: 60/120 - low

Your score on Neuroticism is low, indicating that you are exceptionally calm, composed and unflappable. You do not react with intense emotions, even to situations that most people would describe as stressful.

Extraversion:

Extraversion is marked by pronounced engagement with the external world.

Score: 101/120 - high

Your score on Extraversion is high, indicating you are sociable, outgoing, energetic, and lively. You prefer to be around people much of the time.

Openness To Experience:

Openness to Experience describes a dimension of cognitive style that distinguishes imaginative, creative people from down-to-earth, conventional people.

Score: 81/120 - high

Your score on Openness to Experience is high, indicating you enjoy novelty, variety, and change. You are curious, imaginative, and creative.

Agreeableness:

Agreeableness reflects individual differences in concern with cooperation and social harmony. Agreeable individuals value getting along with others.

Score: 83/120 - high

Your high level of Agreeableness indicates a strong interest in others' needs and well-being. You are pleasant, sympathetic, and cooperative.

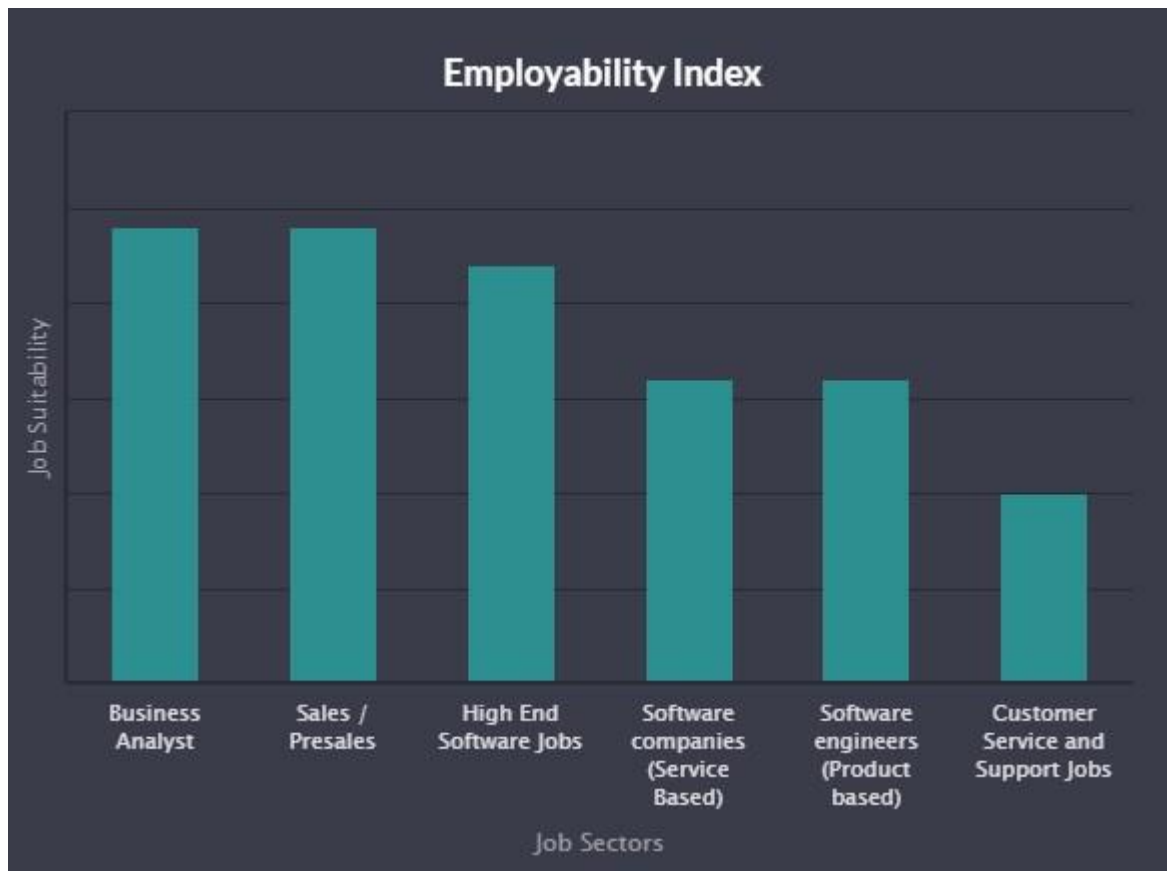
Conscientiousness:

Conscientiousness concerns the way in which we control, regulate, and direct our impulses.

Score: 102/120 - high

Your score on Conscientiousness is high. This means you set clear goals and pursue them with determination. People regard you as reliable and hard-working.

EMPLOYABILITY INDEX :



The Student will do better in Job roles like Business Analyst and Sales/Presales

Present Status:

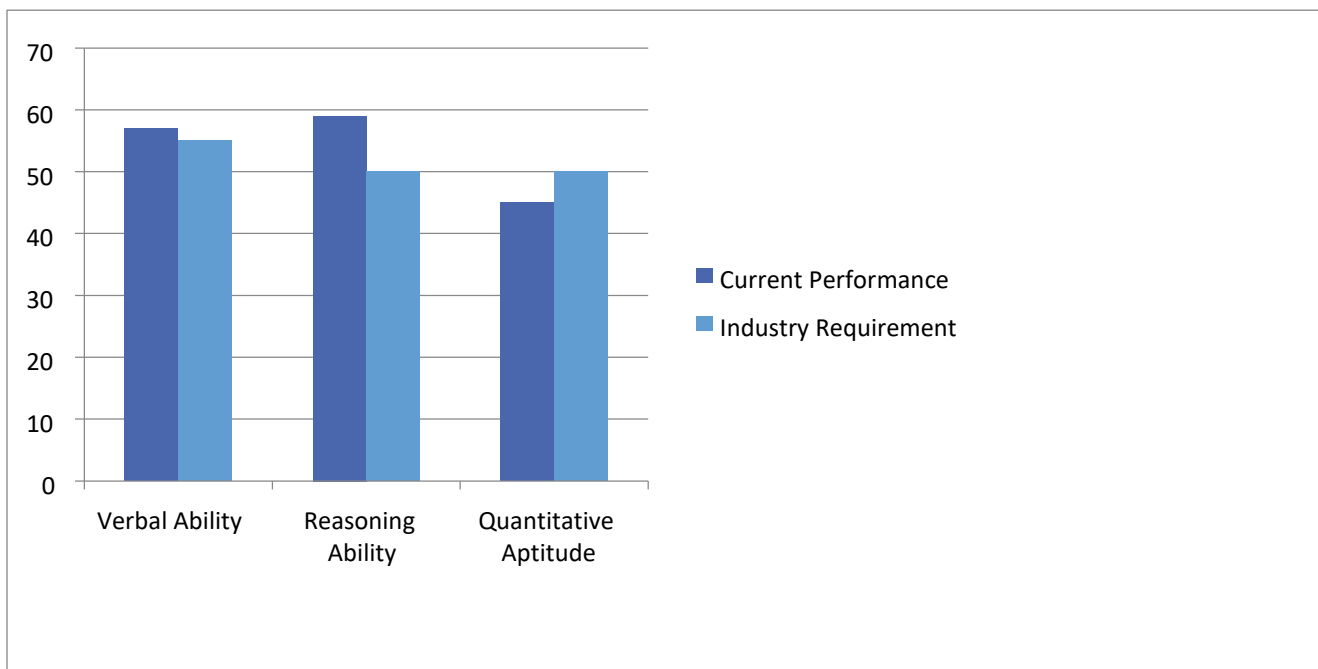
COGNITIVE SKILLS:

44 Tests	49 Attempts	2 Abandoned
688 Questions	269 Unattempted	73 _s Speed
45 % Accuracy		

**After 6 months of using Platform*

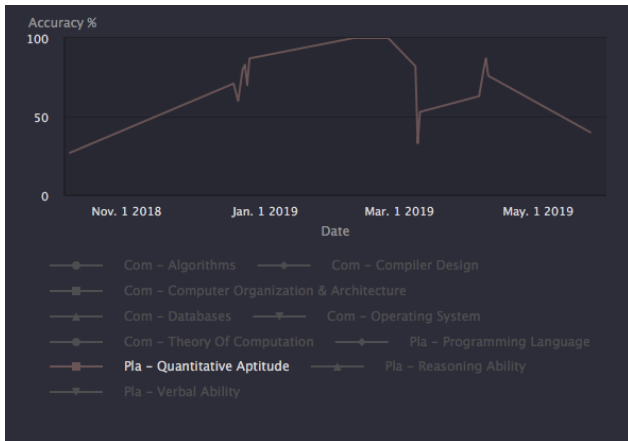
71 Tests	81 Attempts	3 Abandoned
1535 Questions	306 Unattempted	36 _s Speed
65 % Accuracy		

**After 1 year of using Platform (Present)*

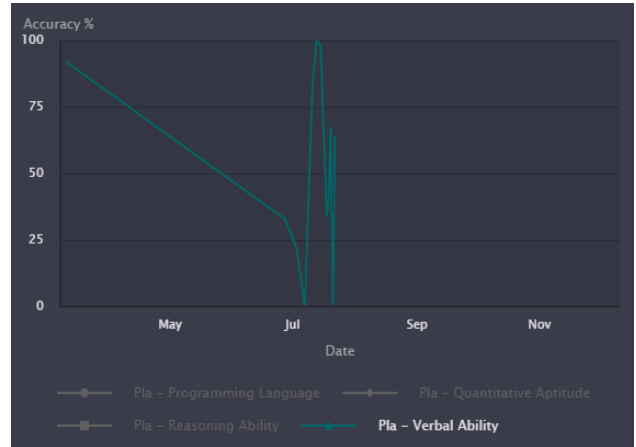


The Cognitive skills are pretty much on the higher side as compared to the national average. The reasoning and verbal scores are at par with the industry standards a little more effort is required in Quantitative Aptitude.

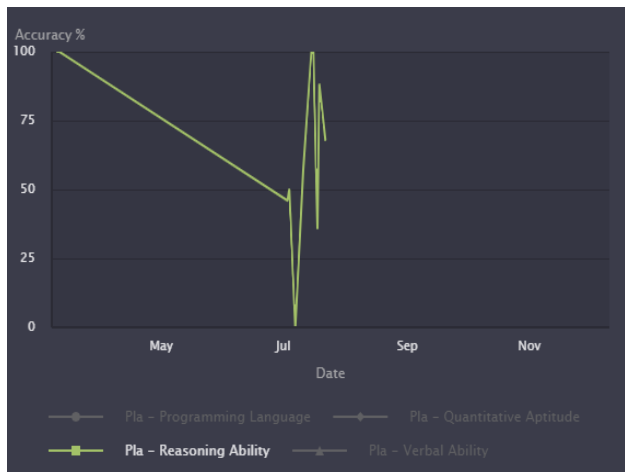
ACCURACY TREND GRAPH:



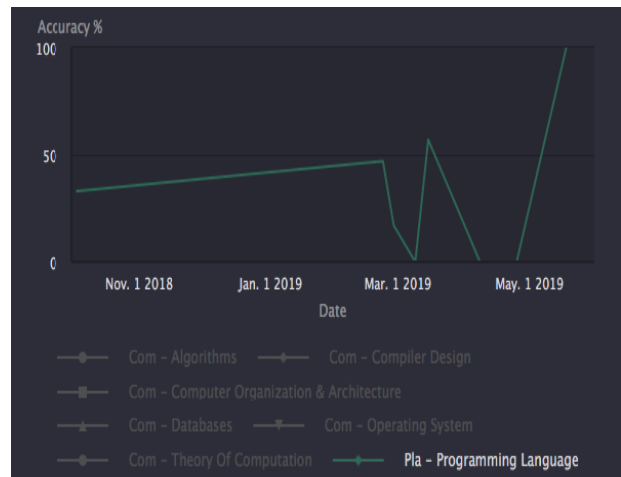
QUANTITATIVE APTITUDE



VERBAL ABILITY

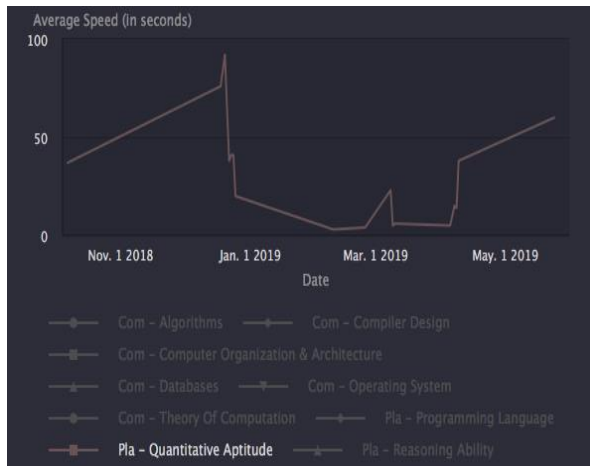


REASONING ABILITY

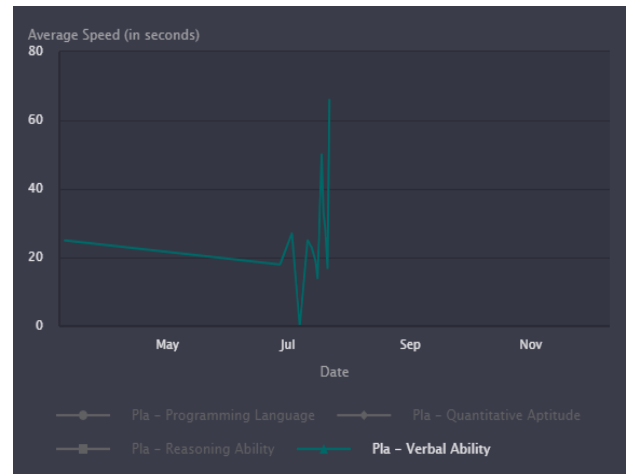


PROGRAMMING LANGUAGE

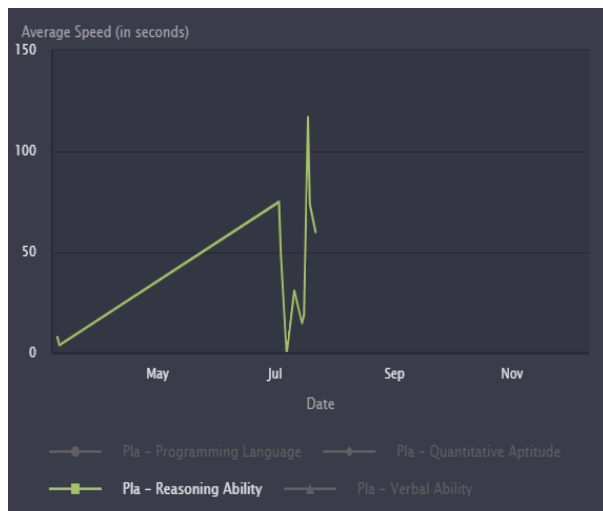
SPEED TREND GRAPH:



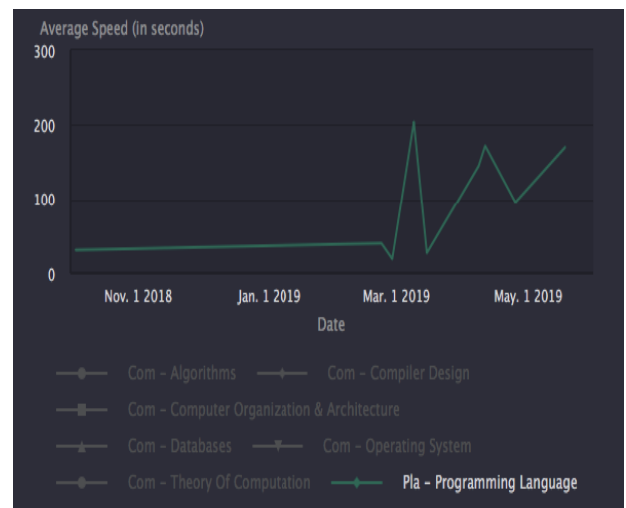
QUANTITATIVE APTITUDE



VERBAL ABILITY



REASONING ABILITY



PROGRAMMING LANGUAGE

INDUSTRY SKILLS:

Mec - Thermodynamics		
6 Tests	6 Attempts	0 Abandoned
101 Questions	41 Unattempted	35 s Speed
40 % Accuracy		

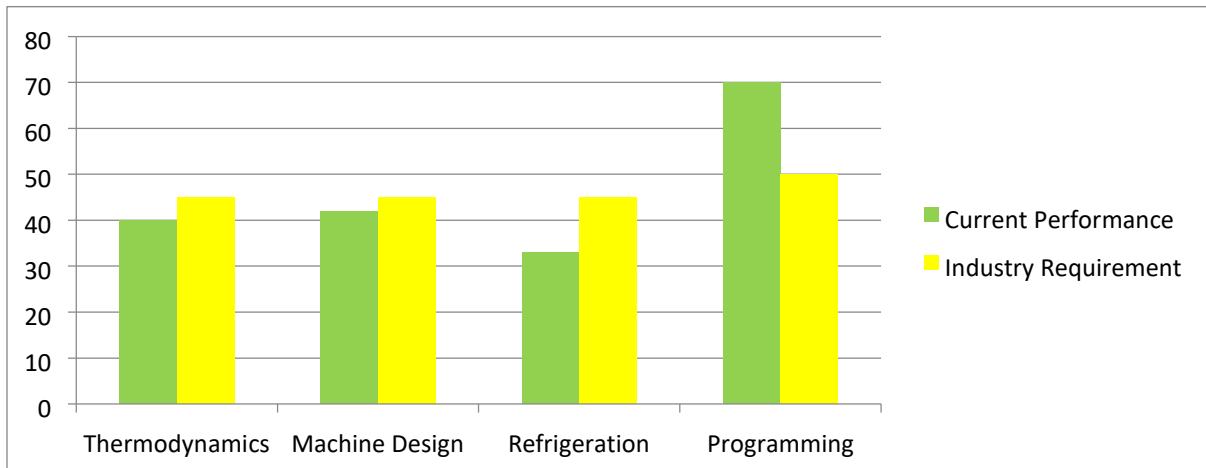
Mec - Machine Design		
3 Tests	3 Attempts	0 Abandoned
11 Questions	1 Unattempted	100 s Speed
42 % Accuracy		

Mec - Refrigeration & Air Conditi...		
2 Tests	2 Attempts	0 Abandoned
21 Questions	7 Unattempted	79 s Speed
33 % Accuracy		

Pla - Programming Language		
23 Tests	25 Attempts	0 Abandoned
235 Questions	29 Unattempted	32 s Speed
70 % Accuracy		

The core of your curriculum demands excellence in three topics which are very relevant to the modern industry and most of the core recruitment drives revolve around these. You have managed a very average score in that.

Programming language score stands at 70% which is more than average and can fetch you good jobs in the fields where automations are widely used. Continue with the same proficiency and improve on your weak areas.



Current Status of Employability:

Your Diagnosis for suitable job roles with in-depth analysis

	Analytical	Quantitative	English	Domain	Computer Fundamentals	Coding	WET
Analyst	✓	✓	✓				✓
Customer Service Executive	✓		✓				✓
Graduate Engineer (Plant)	✓	✓	✓	!			
Graduate Engineer (R&D)	✓	✓	✓	!			
Network Engineer	✓				✓		
Operations Executive	✓	✓	✓				

You have more chances of success in Business Analyst, Sales, and High End Software Jobs. Software companies (service & product based), and Customer Service jobs are your weak areas. You need to work more on that.

Areas of Interest



Learning Plan:

From our analysis, we found you to be a student with great potential. All you need is a little guidance towards the right direction. From your performance and your inclination towards certain side, we have prepared

Perfectice Eduventure Pvt. Ltd. Copyright © 2019

The information in this document is the property of Perfectice Eduventure Pvt. Ltd.

a plan especially for you. We would suggest you to take the following steps seriously, to ensure a successful career ahead.

1. You need speed in Non-Technical Part which you can improve by attempting more and more tests from “CRT-Lite” package. You can check that in packages section. Stick to a routine and solve 5 tests in each section (QA, VA, LR) for a month.
2. Your programming skills are quite well. For more insights in this sector, you can refer to our Learning Material in E-Learning Section. Take some time out of your day regularly and keep revisiting these contents.
3. For your Core Part, your weak spots are in General Aptitude, Engineering Mathematics, Heat & Mass Transfer. You need to increase accuracy in these 3 For that you need both Contents as well as practice test. You can find that in our Packages Section under the name of “SSP”. Stick to a routine and attempt at least 2 test sets daily till a month.

For your assistance, MyPerfectice is always ready. You can contact us at any moment. It would be a pleasure for us to assist you.

Learning Outcomes:

Following the above mentioned learning strategy, you can improve your performance by at least **20% in a month**. Working together, it'll be a child's play for us to bring that change.

Once, you're done with the above strategy, you'll see these changes in your performance:

1. Cognitive:

Expected to reach around 70% accuracy by the end of the month.

2. Industry Skills:

Expected an overall accuracy around 40% by the end of the month, with specialization in your weak areas that include Engineering Mathematics, and Heat transfer as that of now. The Programming skills are supposed to rise up to 80% with dedicated time per question reduced by 10 secs.